



SPOTLIGHT



Vol. 5

Rehearsal Recap

Another fun rehearsal this week, with the cast continuing to build confidence and energy across the show!

We revisited Flavour Fever and worked on Dancing to Survive, continued to strengthen vocals, timing, and choreography. Rehearsals also focused on several sketches, including Death by Chocolate, The Great Icecream Scoop Off, and Detectives Directives, where the cast began working through rough stage positioning (blocking). You all did brilliantly!



As we continue moving forward with the show, make sure you're practising the songs and items at home so we can keep smashing through rehearsals together!

Patrols took part in an awesome Patrol Challenge, creating some very creative (and sometimes questionable!) ice-cream flavours. My overall favourite was Cookie Cone.


Overall, another fantastic rehearsal. Learn your dances! Be prepared to go through all of Act 1 next week!

— Aya



Next Rehearsal

 **Date:** Sunday 31st May 2026

 **Time:** 5:45pm - 8:30pm

 **Venue:** 1st Carrum Downs - 3 Arbor Way, Carrum Downs (Rehearsal Venue)

Running late? Unwell? Can't make it? Please text Stabby on 0432 285 154

Duty Patrols:

Palais (Opening) - Comedy (Closing)

Members in these patrols will need to arrive 10 mins earlier to set up and stay back to pack up (approx 10 mins)

Website: southmetroshowtime.org

[@southmetroshowtime](https://www.instagram.com/southmetroshowtime)





SPOTLIGHT



Vol. 5

Special Rehearsal - Book baddies (5:00pm)

The following Cast members are required for a special rehearsal at 5:00pm:

Lea Z	Connor S	Elyssia G	Teagan P	Lucy R	Dinal W	Jonah C
Elliot M						

Special Rehearsal - Along the grapevine (5:00pm)

The following Cast members are required for a special rehearsal at 5:00pm:

Lizzie H	Kieren M	Maxwell R	Lauren H	Grace W	Alice G	Patrick D
Lillian D	Indie B	Jackson L				

If you're unable to make it to a Special Rehearsal - Please let Stabby know on 0432285154

📍 Where to Find Important Stuff — The Members Area!

Head to southmetroshowtime.org, and in the top right-hand corner of the website you'll see a button labelled "**Members**". Click on this and enter this year's password to access the full Members Area.

Password: 2026SMST!

🎂 Birthday Shoutouts!

A huge shout out and Happy Birthday to the following SMST Members who are celebrating their birthday this week:

Lauren Hurley (Phoenix)

Piper Austin (Phoenix)

Wishing all our SMST members a birthday filled with laughter, fun and lots of cake!



Website: southmetroshowtime.org

[@southmetroshowtime](https://www.instagram.com/southmetroshowtime)





SPOTLIGHT



Vol. 5

SMST Merch Store! Now Open

Want to rep Showtime in style *and* stay warm this winter? Our **royal blue SMST zip-up hoodies** are now available to **pre-order** through our online webstore! And now we've got **Beanies too!**


These are an optional extra and perfect for rehearsals, school, or just showing your Showtime pride out and about. For Hoodies, once we receive **20 orders**, the batch will be processed — so encourage your castmates to get on board too! Beanies are in stock right now!

 Order now at:

<https://shop.fullypromoted.com.au/south-metro-showtime>

Please note the following,

1. The first time you use the link, DON'T TRY TO CREATE A USER OR LOGIN
2. Place the order for the items.
3. When you go to check out fill out all the details
4. At the end it will ask you to enter the password
5. This will automatically create you a login

You can use this login to check what you have ordered in the past and make further orders after your first order  Look sharp, stay cosy, and show off that Showtime spirit!



Social Media!

Adults (being over 18) in Scouting must not befriend Youth Members on social media, nor respond to requests to befriend (except family). This also applies in reverse, youth members (under 18) are not to follow or request to follow adults on Social Media.

Adults in Scouting should not interact privately with Youth Members in any form of social media. Where social media is used to organise events (Scouting activity) a publicly 'open group' or event/activity network involving more than one Adult and more than one Youth Member is to be used. This provision does not mean that an Adult cannot also be a friend of a Youth Member, nor does it mean that an Adult cannot provide mentoring and support to individual Youth Members in their Scouting roles, however, in Child Protection terms, Adults in Scouting carry a higher duty of care, not only for Youth Members, but also to the Scout Association. This responsibility overrides the need for private relationships online. Please email Breanne at marketing@southmetroshowtime.org if you need any clarification.

Website: southmetroshowtime.org

[@southmetroshowtime](https://www.instagram.com/southmetroshowtime)





SPOTLIGHT



Vol. 5

💰 Fees Reminder – Thank You & Final Call!

A big thank you to all cast members and families who have already paid their show fees or arranged a payment plan — we really appreciate it!

If you haven't yet paid or organised a plan, **fees are now overdue**. These payments help us cover important behind-the-scenes costs and all the magic that brings Showtime to life.

If you're having trouble or need support setting up a payment plan, please get in touch with the team at finance@southmetroshowtime.org as soon as possible. We're here to help — but we do need to hear from you!

Let's keep the show rolling smoothly — thank you for your cooperation and support! 🙌

🍰 What Dessert Am I? - Quiz Question 🤔

I'm soft and fluffy,

I'm usually baked in a paper case,

I often wear frosting like a little hat...

What am I? 🍰



Countdown to Theatre: 90 Days
(as of 24th May 2026)

Need support during rehearsals?

Our awesome Support Team is always around if you need anything. You can also get in touch with our Support Manager **Shelley Brown**, at support@southmetroshowtime.org.

Website: southmetroshowtime.org

[@southmetroshowtime](https://www.instagram.com/southmetroshowtime)





SPOTLIGHT



Vol. 5

🎭 Centre Stage Advice from the PLs 🎭

A message from our Patrol Leaders sharing tips, reflections, and inspiration from their Showtime journey.

🌟 Georgia – Palais Patrol Leader 🌟

When it's showtime, stay calm, trust your preparation, and enjoy the moment. Take a deep breath, focus on doing your best, and remember that confidence comes from believing in yourself. Have fun, let your personality shine, and don't stress about being perfect.



🏆 Patrol challenge 🏆

This week the patrols were challenged with creating and marketing their very own icecream flavour! Every patrol came up with a creative and unique ice cream flavour for the cast to buy. Astor rose to the top of the ice cream tower with their unique and spicy Phoenix Fire Blast with twenty-eight cast members ready to buy it.

Princess presented their cream cheese ice cream, which was the production favourite. It maybe even deserves its own cheese award for the theatrical performance!

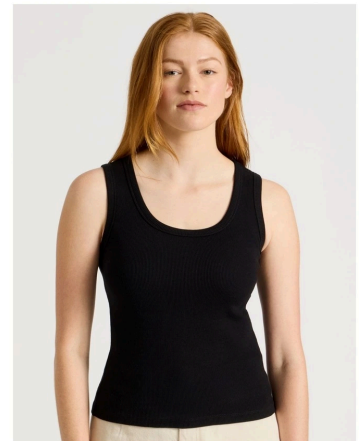
Comedy performed as a team to bring us their Fantasy Fruit Swirl! This interesting flavour had us all looking for desserts early!

🎭 Black Base Layer Reminder 🎭

All cast members are required to supply and bring their own black base layer to rehearsals and performances.

This base layer must:

- Cover at least as much as a singlet top
- Include bike shorts (to mid-thigh length)



Website: southmetroshowtime.org

[@southmetroshowtime](https://www.instagram.com/southmetroshowtime)

